



Sustainable Island Development Initiatives (SIDI) Week 2013

Students Research & Development Team for Small Islands (SR&DT-SI)
13-18 November 2013

Program Book

ITS	Hochschule Wismar	DAAD	University of Trunojoyo Madura		
Ministry of Ocean Affair & Fishery	Berau Regency	Sumenep Regency			
Cosmic Star	EnviTech	SanLeaf Europe	Kakanoo	SEES	Ekonid



1) Prelude

The Sustainable Island Development Initiatives (SIDI) aims to contribute in developing sustainability concepts in developing small islands and to implement them. In order to achieve the above objectives, SIDI serves as an umbrella covering a research and implementation activities of multidisciplinary character, having in mind the many facets of an island development from energy, economic, environmental, societal up to educational issues.

SIDI was established on 10 November 2012 marked with the joint cooperation agreements between ITS, Ministry of Ocean Affairs and Fishery, Head of Berau District (East Kalimantan), Wismar University of Applied Sciences (Germany). Through SIDI, ITS has been assigned by the ministry to “adopt” two archipelagic areas, Poteran Island (Sumenep District) and Maratua Island (Berau District). At Poteran Island it is aimed to conduct research on tropical herbal extracts which later can be used for medical, nutritional and cosmetic products.

On the other side, Maratua Island lying at the country border at the Sulawesi Sea, is a marine tourism area. Efforts at exploiting at materializing the marine tourism potential of the island finally shall consider the environmental and societal sides which are primary in developing such an island.

Status

SIDI has conducted an array of discussion which finally end with a roadmap on areas of research and community development activities plan.

Activities

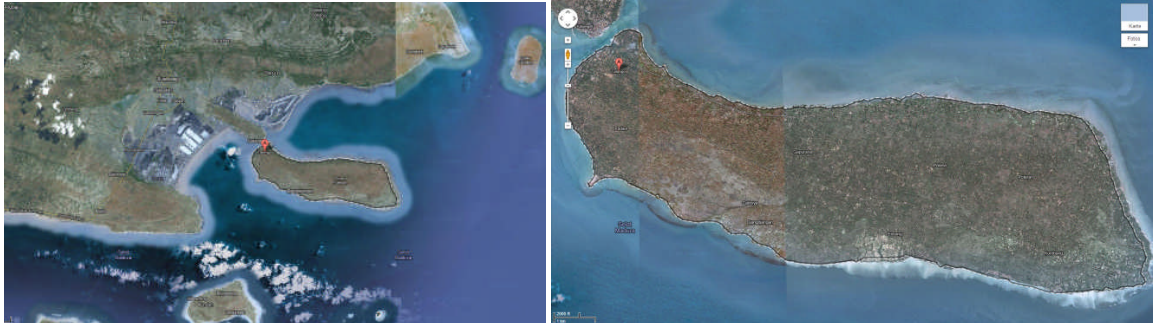
The aims of SIDI Week is to boost the activities for sustainable island development.

The activities of SIDI Week 13-18 November are:

- Informing a new program supported by DAAD Germany, to be started November 2013.
- Parallel site visit to Maratua & Poteran
- Development of new research agenda for Maratua and Poteran Islands
- Enhancing support and making commitments for SIDI activities

2) Profile of Islands

a) Poteran Island



Strategy proposal

Agro-industry-based development:

- Cultivation of tropical plants with high value-added potential; material-based and energy-based utilization; extraction of herbal substances with market potential in nutrition, cosmetics or pharmaceutical industries, both Indonesian/Asian and German/European markets;
- Integration with local sea fisheries, and with mangrove & coral protection activities

Location

- Sumenep Regency, East Java;
- East of Madura island, about 100 km east of Surabaya;
- Accessibility: by car from Surabaya to Sumenep (5 hrs); ferry-boat (car and passenger) Sumenep to Talango (20 min);

Conditions

- Sumenep area includes 126 scattered islands, 48 of them inhabited;
- 8 villages at Poteran island, Talango - opposite to Sumenep - is one of these villages, religious pilgrim site;
- Economy dominated by agriculture (rice, corn, soybeans, peanuts, green beans, cassava and sweet potatoes, tobacco), sea fishery and aquaculture;
- Industry (mainly small industry and handicraft) with low employment potential;
- Tourism is concentrated in Sumenep, not on the islands;



Project Proposals

- Value- added process by tropical herbal extract production;
- Primary orientation on Moringa Oleifera, optional 10 further plants;
- Pre-processing for quality assurance on-site at the island;
- Extracts are to be shipped for export & domestic market;
- Sustainability development: value-added production on the island; island-based energy generation (e.g. biomass), cooling/refrigeration capacity; environmental protection (mangrove belt, corals);

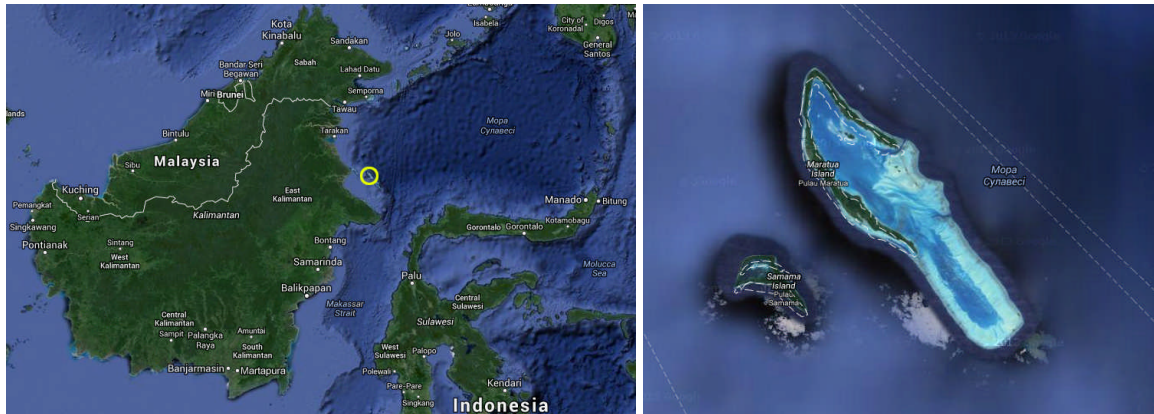
Status

- Joint Ph.D. working group ITS and Hochschule Wismar established;
- Respective project proposal launched for financial support by the German Government;
- Dept. of Biology ITS undertake Investigation on the population of Moringa Oleifera & few other plants;
- Dept. of Chemistry ITS and Hochschule Wismar conduct 4 years joint research on Herbal extraction techniques;
- Marine Research Center, ITS & University of Trunojoyo Madura conduct 3 years research on zonation of Poteran Island;

Stages



b) Maratua Island



Strategy proposal

Tourism-based development:

- Maratua Islands has good development potential for any kind of marine/maritime tourism (diving, sailing, sport fishery). Touristic exploitation has already been commenced, particularly with dive resorts. However, the socio-economic and ecologic effects of these activities are not well balanced until now.
- Tourism development shall be combined with restoration and protection measures of the Islands environment, with decentralized energy & water supply and disposal solutions.
- All development measures shall significantly contribute to the improvement of working (income) and living situation of the Islands inhabitants.

Location

- Berau Regency, East Kalimantan;
- East of Tanjungbatu, in the Sulawesi Sea, on the coastal shelf of East Kalimantan;
- Accessibility: flight from Surabaya via Balikpapan to Tanjungredeb (3 hrs), by car to Tanjungbatu (2 hrs), by speed-boat to Maratua island (2 hrs);

Conditions

- Maratua Islands is part of Derawan Archipelago: Derawan, Sangalaki, Kakaban, Maratua, Panjang, Samama Island, and several submerged reefs and islets;
- 9 Maratua Islands: main island with the name of Maratua and cluster of small islands in its bay namely Sidau Island, Semut Island, Andongabu Island, Sangalan Island, Bulingisan Island, Nusa Kokok Island, Bakungan Island, Nunukan Island and Pabahanan Island.
- Inhabitants: 4 villages of 2,704 people;
- Fishing is still the most important income-generating activity for the community (live groupers, napoleon wrasse, lobsters);
- 2 dive resorts on Maratua Islands; more resorts or facilities are in the planning process;
- Berau Marine Conservation Area is formed in 2005 has 1,321 million hectares area which lies among Pulau Panjang (Long Island), Karangtigau Cape, and Baliktuba Reef. The area has the second highest coral reef biodiversity in Indonesia and third highest in the world. The ecosystem covers coral reef, mangrove forest and sea grass.

- Biodiversity: Located in a biodiversity hotspot, the Maratua Islands feature 872 species of reef fishes, 507 species of coral and invertebrates, including protected species (5 giants clam species, 2 sea turtles, coconut crab, etc.). Some of the islands harbour the heavily exploited turtle eggs and yet the largest green turtle nesting site in Indonesia.
- Problems: Overfishing, overexploitation, including turtle egg collection; destructive fisheries utilizing cyanide and explosives; environmental degradation caused by diving related activities and unsustainable tourism development; increase of sedimentation due to intensive logging activities in Berau estuary nearby; increase of sewage pollution caused by growing human population on small islands and the intensive tourism development.



Potential Project Proposals

- Incorporate the Maratua Islands into the Asian Cruise-Shipping routes;
- From a protected anchorage, a wide variety of marine/maritime and island excursion offers shall be provided to the passengers. For this purpose, a safe, efficient and environmentally friendly boat system shall be developed, comprising fast shuttle boats, diving boats & platforms, “tropical island explorers” (with little draft and own landing capability), sailing boats (on the basis of the traditional Phinisi boats), ...

Status

- ITS and the Indonesian Ministry of Marine Affairs and Fisheries have signed an agreement on the development of small islands.
- ITS and Hochschule Wismar have signed a Memorandum of Agreement for the joint conduct of sustainable island development projects under the framework of the “Sustainable Island Development Initiative (SIDI)”.
- A Memorandum of Understanding between ITS and the administration of Berau Regency on the development of Maratua has been signed.
- In two meetings of ITS, Hochschule Wismar and representatives of Berau Regency the local situation and development prospects of Maratua Islands and the Archipelago have been discussed. Berau Regency has invited both partners to visit the Maratua Islands for a Fact Finding Mission.
- ITS as well as Hochschule Wismar have been carefully approached potential industry partners (German and Indonesian). There is considerable interest on both sides, being basis for joint venture opportunities.
- A Joint Fact Finding Mission ITS and Hochschule Wismar was undertaken 7-9 January 2013.

Stages



3) Potential Areas of Activities

a) Electricity Scarcity

Problems/Focus	Type of Activities	Maratua	Poteran	Funding
Biomass	Research	X	X	Ristek/ Dikti
Wind energy	Research	X	X	Ristek/ Dikti
Solar energy	Research	X	X	Ristek/ Dikti
Energy-saving lights	Research & Implementation	X	X	Industry
Energy consumption assessment	Research	X	X	Government

b) Environmental Problem

Problems/Focus	Type of Activities	Maratua	Poteran	Funding
Mangrove revitalization/ replanting	KKN/ Student Activity for the Community			KKP
Water management	Research & Implementation			Government
Waste management	Research & Implementation	X	X	

c) Marine Tourism

Problems/Focus	Type of Activities	Maratua	Poteran	Funding
Assessment of marine tourism potential		X		
Boat building		X	X	
Tourism information system		X		
Tourism infrastructure: hotel, restaurants, marina		X		

d) Vegetation

Problems/Focus	Specific Activities	Status	Type of Activities	Maratua	Poteran	Funding
Investigation on the population of <i>Moringa Oleifera</i> & few other plants	Dept. of Biology, ITS	On-going research			X	Desentralisasi Riset Unggulan
Investigation on the usage of seaweed for biofuel					X	

e) Herbal Extract Product

Problems/Focus	Specific Activities	Status	Type of Activities	Maratua	Poteran	Funding
Commercialization of herbal extract product			Research & Implementation		X	Industry
Logistic System			Research & Implementation			
Herbal extraction techniques	Joint research RI-DE; 4 years	On-going research; Dept. of Chemistry ITS & Wismar			X	
First screen test of herbs contents	2013	Dept. of Chemistry				

f) Social Aspects

Problems/Focus	Specific Activities	Status	Type of Activities	Maratua	Poteran	Funding
Floating clinics				X	X	
Improvement of healthcare system						KKP
Establishment of disaster management			Implementat ion			Governme nt
Promoting "Lecturer/ student goes to small islands"			Implementat ion			Industry/ Dikbud/ Pemd a
Zonation of Poteran Island	Marine Research Center, ITS & University of Trunojoyo Madura: 1	On-going; EPI-NET, 3 years, start 2013				EPI-NET, Governme nt

g) Infrastructure

Problems/Focus	Type of Activities	Maratua	Poteran	Funding
Road improvements	Implementation	X	X	KKP
Berth improvements	Implementation	X	X	KKP
Ice production enhancement	Implementation	X	X	KKP
Transportation enhancement	Implementation	X	X	

h) Capacity Building

Problems/Focus	Type of Activities	Maratua	Poteran	Funding
Student exchange			X	Dikti/ DAAD
Researcher exchange			X	Dikti/ DAAD

4) Schedule

a) Summary

Wednesday, 13/11/2013

Location: Senate Room, Rectorate

- 10:00 – 12:00 : Opening by Rector of ITS
- 12:00 – 13:00 : Lunch/ break
- 13:00 – 17:00 : Kick-off meeting

Thursday, 14/11/2013

Locations: FMIPA meeting room for Poteran Group, FTK meeting room for Maratua Group

- 10:00 – 12:00 : Presentations about research plans
- 12:00 – 13:00 : Lunch/ break
- 13:00 – 15:00 : Presentation of supporting activities, expectation, discussion
- 15:00 – 17:00 : Promoting SR&DT-SI to students and researchers

Friday, 15/11/2013 – Sunday 17/11/2013

Separate site visits to Poteran and Maratua Islands.

Monday 18/11/2013

Locations: FMIPA meeting room for Poteran Group, FTK meeting room for Maratua Group.

- 10:00 – 12:00 : Presentation of findings, discussion, planning
- 12:00 – 13:00 : Lunch/ break
- 13:00 – 15:00 : Wrap-up, plan presentation
- 15:00 – 15:30 : Break/coffee

Location: Senate Room

- 15:30 – 16:30 : Presentation of planning
- 16:30 – 17:00 : Closing by Rector of ITS

b) Detailed Agenda

i) *Schedule 1 (Wednesday, 13/11/2013)*

Location: Senate Room, Rectorate

- 10:00 – 12:00 : Opening by Rector of ITS
- 12:00 – 13:00 : Lunch/ break
- 13:00 -17:00 : Kick-off meeting

Aims:

To present an overview of SIDI and to enhance participation and public awareness on the issues of sustainable development of small islands.

To endorse commitments for implementing SIDI activities.

Activities:

Opening ceremony & Kick-off meeting

Attendants:

Universities: ITS (faculties, research centers), Wismar Univ, Trunojoyo Univ.

Government: KKP, Heads of Districts

Industry: EnviTech, SanLeaf Europe, Cosmic Star, SEES, Kakanoo, Ekonid,

Rundown 10:00-12:00:

- Welcoming address by Rector ITS
- Opening remarks by Director General of Small Islands Management, KKP
- Presentation on "SIDI: profile, objectives and activities" by ITS
- Presentation on "Students' R&D Team on Small Islands" by Rector of Wismar University of Applied Sciences
- Presentation on "SIDI project status" by ITS and Wismar team
- Break/lunch

Rundown 13:00-17:00:

- How KKP supports SIDI activities (KKP)
- Sumenep priorities for Poteran island development (Bupati Sumenep and Univ Trunojoyo)
- Berau's priorities for Maratua island developments as tourism area (Bupati Berau)
- Lessons learned from Poehl Island sustainable development (Wismar Univ.)
- Discussion

ii) Schedule 2 (Thursday, 14/11/2013)

Locations: FMIPA meeting room for Poteran Group, FTK meeting room for Maratua Group

- 10:00 – 12:00 : Presentations of research plans
- 12:00 – 13:00 : Lunch/ break
- 13:00 – 15:00 : Presentation of supporting activities, expectation, discussion
- 15:00 – 17:00 : Promoting SR&DT-SI to students & researchers

Aims:

To present research plans and supporting activities from each participant.

To prepare plans so that the trip to Poteran and Maratua goes as expected.

To promote SR&DT-SI to the students and researchers

Activities:

Meeting with industry partners

Meeting with students and researchers

Attendants:

Universities: ITS (faculties, research centers, students, researchers), Wismar University

Government: KKP

Industry: EnviTech, SanLeaf Europe, Cosmic Star, SEES, Kakanoo, Ekonid,

Rundown 10:00-12:00:

(Poteran Group)

- Presentation of research progress and plan on:
 - Investigation of plant population (Dept. of Biology ITS)
 - Initial analysis of chemical content of plants (Dept. of Chemistry ITS)
 - Extraction technologies (Dept. of Chemistry Wismar Univ)
- Break/lunch

(Maratua Group)

- Presentation of Maratua island potrait (University)
- Presentation of research plan on:
 - Sparkling Island (ITS)
 - LED technologies for remote island (PT SEES)
 - Biomass and solar energy as alternative energy resource (industry, university)
 - Electricity provision: producing vs transporting (university)
- Break/lunch

Rundown 13:00-15:00:

(Poteran Group)

- Plans:
 - From plants to product: ideas to produce herbal extracts (industry, university)
 - Supporting activities for herbal extract production (KKP, industry)
 - Expected information from trip to Poteran.
- Wrap up: conclusion of meeting

(Maratua Group)

- Plans:
 - Supporting activities to improve energy supply in small islands (KKP, industry)
 - Expected information from trip to Maratua
 - Discussion
- Wrap up: conclusion of meeting

Rundown 15:00-17:00:

- SR&DT-SI promotion:
 - Poteran and Maratua Group join together
 - SR&DT-SI presentation and discussion with students and researchers

iii) Schedule 3 (Friday, 15/11/2013 to Sunday, 17/11/2013)

Locations: Poteran Island for Poteran Group

- Friday, 15/11 : Depart from Surabaya to Sumenep
- Saturday, 16/11 : Visit Poteran Island
- Sunday, 17/11 : Return from Sumenep to Surabaya

Locations: Maratua Islands for Maratua Group

- Friday, 15/11 : Flight to Berau
- Saturday, 16/11 : Visit Maratua Islands
- Sunday, 17/11 : Flight from Berau to Surabaya

Aims:

To explore the Islands for the needs of SIDI researches.

To endorse commitments for implementing SIDI activities.

Activities:

Site visit Poteran and Maratua

Attendants:

Universities: ITS (faculties, research centers), Wismar Univ, Trunojoyo Univ.

Government: KKP, Heads of Districts

Industry: EnviTech, SanLeaf Europe, Cosmic Star, SEES, Kakanoo, Ekonid,

Rundown 15 November:

(Poteran Group)

- Morning: Depart from Surabaya in early morning to Sumenep (by car)
- Afternoon: Meeting Bupati
- Stay overnight in Sumenep

(Maratua Group)

- Morning: Flight to Berau, accompanied by KKP
- Afternoon: Meeting Bupati (tentatively)
- Evening: Meeting with
- Stay overnight in Berau

Rundown 16 November:

(Poteran Group)

- Morning: Visit Poteran Island
- Field exploration at Potteran Island and surrounding
- Stay overnight at Poteran Island (otherwise in Sumenep)

(Maratua Group)

- Morning: Boat from Berau to Maratua
- Field exploration at Maratua
- Stay overnight at Maratua

Rundown 17 November:

(Poteran Group)

- Morning: Return trip from Sumenep to Surabaya
- Afternoon/evening: Arrival in Surabaya

(Maratua Group)

- Boat from Maratua to Berau (Kalimaran Airport)
- Afternoon: Flight from Berau to Surabaya

iv) Schedule 4 (Monday, 18/11/2013)

Locations: FMIPA meeting room for Poteran Group, FTK meeting room for Maratua Group

- 10:00 – 12:00 : Presentation of findings, discussion, planning
- 12:00 – 13:00 : Lunch/ break
- 13:00 – 15:00 : Wrap-up, plan presentation
- 15:00 – 15:30 : Break/coffee

Location: Senate Room

- 15:30 -16:30 : Presentation of planning
- 16:30-17:00 : Closing by Rector of ITS

Aims:

To present the findings from the visit of Poteran and Maratua.

To plan the next agenda to be done.

Activities:

Presentation of findings, Presentation of planning, and LOI signing

Attendants:

Universities: ITS (faculties, research centers), Wismar University

Government: KKP, Head of Districts

Industry: EnviTech, SanLeaf Europe, Cosmic Star, SEES, Kakanoo, Ekonid,

Rundown 10:00-15:00:

- Presentation of findings/ results of the field trip
- Discussion, planning
- Break/lunch
- Wrap-up, plan presentation
- Break/coffee

Rundown 15:30-17:00:

- Presentation of Poteran plan
- Presentation of Maratua plan
- Discussion, revision, establishing commitments
- Break/ preparation for LOI signing
- LOI signing
- Closing by Rector of ITS

5) Partners

a) Education

i) *Institut Teknologi Sepuluh Nopember (ITS)*



Founded in 1960, ITS has become one of the best technological universities in Indonesia. It currently has 5 faculties namely Faculty of Mathematics and Natural Sciences, Faculty of Industrial Technology, Faculty of Civil Engineering and Planning, Faculty of Marine Technology and Faculty of Information Technology. The total of department is 23 with 6 diploma programs (D3), 23 undergraduate programs (S1), 18 master programs (S2) and 12 doctoral programs (S3).

ITS as Eco Campus cares and conducts systematic and sustainable environmental management. It is the reflection of the involvement of the entire academic community in order to always pay attention to aspect of health and the environment around it. ITS has many contributions for community works. In 2005, ITS contributed to recovery Tsunami Victim by creating houses for the victims. Moreover, ITS has collaborated with Tim Kajian Kelayakan Pemukiman to do research on the feasibility of settlement for the victims of Sidoarjo Mud Volcano, East Java since 2008. The collaboration resulted in widened impact area as officially claimed for the mud volcano which is very helpful for the victim to get the compensation from the government.

Contact:

Address : Kampus ITS Keputih, Sukolilo, Surabaya 60111, Jawa Timur

Phone : +62 31 5994251-0

Fax : +62 31 5943358

Website : <http://www.its.ac.id>

ii) *Hochschule Wismar*



The Hochschule Wismar, University of Applied Sciences: Technology, Business and Design (or short: University of Wismar), is the third-biggest and third-oldest public university in Mecklenburg-Vorpommern, Germany. The university is situated at the Baltic coast in the very north of Germany with its campus being only 500 meters away from the harbor. The university was founded in 1908 as an engineering academy and has become an important part in the city's cultural life.

Since 2007 the university has been restructured and has now 3 faculties namely Faculty of Engineering (Mechanical, Process and Environmental Engineering, Civil Engineering, Electronics and Multimedia Engineering, Maritime Studies), Faculty of Business which also called Wismar Business School (Business Administration, Business Law, Business Informatics), Faculty of Design (Design, Architecture, Interior Architecture, Communication Design).

The university offers more than 50 courses, including distance learning courses. Some courses in Maritime Studies are offered in cooperation with the European Cruise Academy. Most courses lead to a bachelor's degree after 3-3.5 years or a master's degree after another 1.5-2 years.

Contact:

Address : Postfach 1210, 23952 Wismar, Germany

Phone : +49 3841 753-0

Fax : +49 3841 753-7383

Website : <http://www.hs-wismar.de>

iii) DAAD



The German Academic Exchange Service or DAAD (German: Deutscher Akademischer Austauschdienst) is the largest German support organisation in the field of international academic co-operation.

DAAD is a private, federally funded and state-funded, self-governing national agency of the institutions of higher education in Germany, representing 365 German higher education institutions (100 universities and technical universities, 162 general universities of applied sciences, and 52 colleges of music and art).

The DAAD itself does not offer programs of study or courses, but awards competitive, merit-based grants for use toward study and/or research in Germany at any of the accredited German institutions of higher education. It also awards grants to German students, doctoral students, and scholars for studies and research abroad. With an annual budget of nearly 300 million Euros and supporting approximately 50,000 grantees annually, approximately 11,000 of which are on long-term scholarships, the DAAD is in fact the largest such academic grant organisation worldwide.

Contact:

Address : Postfach 20 04 04, 53134 Bonn, Germany

Phone : +49 228 882-0

Fax : +49 228 882-444

Website : <https://www.daad.de>

iv) University of Trunojoyo Madura

University of Trunojoyo Madura (UTM) is a state university located in Bangkalan (Madura), East Java Province, Indonesia. Inaugurated on July 23, 2001 by President Abdurrahman Wahid, University of Trunojoyo is the 7th state university in East Java.

University of Trunojoyo Madura is a campus which has a view that school is a place of formation and escalation of life. With on-campus development program, students are facilitated to grow into a mature adult in a faith, character, skills, and intellectual scale. To educate is not only aims to fill the brain with knowledge but to form a person who has a personality that is intact and able to build a better life. This is reflected in the spirit of NON SCHOLAE VITAE DISCIMUS (we learn not for the sake of science alone, but for the sake of life) in which students are encouraged not to pursue a diploma only, but it's better than that, they also have to learn to develop personal and social life.



Contact:

Address : Jl. Raya Telang, Kecamatan Kamal, Bangkalan, Madura 16912 Indonesia

Phone : +62 31 3011146

Fax : +62 31 3011506

Website : <http://trunojoyo.ac.id>

b) Government

i) Ministry of Ocean Affair & Fishery (KKP)



Ministry of Ocean Affair & Fishery's mission, functions, organizational structures and its position in the cabinet are determined by Presidential Decree No.165 in the year 2000 issued in 23 November 2000. The Presidential decree No.9 in the year 2005, stipulated that the main mission of the KKP is: "To Assist the President (of the Republic of Indonesia) in holding the process of governance in the Marine and Fisheries sector"

The Functions of KKP are: 1) The formulation of national policy, implementation policy and technical policy in the Marine and Fisheries sector; 2) The implementation of the governance affairs in the Marine and Fisheries Sector; 3) The management of state-owned properties under KKP; 4) The supervision of KKP mission implementation; 5) Delivery of report to the President on the account of evaluations, suggestions and consideration on KKP mission and Function.

Contact:

Address : Ex. Gedung Humpuss, Jl. Merdeka Timur No. 16, Jakarta

Phone : +62 21 350-0042, 350-0023

Fax : +62 21 350-0041, 351-9133

Website : <http://www.kkp.go.id>

ii) Berau Regency

Berau Regency is one of regencies in East Kalimantan Province. The capital of this regency is located in Tanjung Redeb, Berau. The regency has an area of 34,127 km² consists of land area of 22,031 km², a vast ocean of 12,300 km² and have 52 large and small islands with 13 District, 96 Village. The population of Berau Regency based on data from the Central Bureau of Statistics in 2011 amounted 191,807 people.

The coastal area of Berau Regency is located at Biduk-Biduk District, Talisayan, Derawan and Maratua Island which is geographically adjacent to the ocean. Derawan and Maratua Island are famous as a tourist destination which have a very beautiful beach and panorama as well as having high biodiversity.



Contact:

Address : Jl. APT. Pranoto No.1 Tanjung Redeb 77311, Berau, Kalimantan Timur

Phone : +62 554 21777

Fax : +62 554 21068

Website : <http://www.beraukab.go.id>

iii) *Sumenep Regency*



Sumenep (Madura language: Songènèb) is a regency in East Java Province, Indonesia. Songènèb own name in the sense of Kawi etymology/ Old Javanese have the following meanings: The word "Sung" means a niche/ basin/ valley, and the word "ènèb" which means quiet sediment, so Songènèb / Songennep (in Madurese) has the meaning "quiet valley/ basin".

Area of Sumenep is about 2,093 km², consists of settlements 179 km², forest 424 km², vacant land grass 15 km², plantation/ moor/ shrubs/ fields 1,130 km², ponds/ aquaculture/ brackish water/ lake/ reservoir/ swamp 59 km², and the other about 63 km². In the other hand, the area for the vast potential marine resources and fisheries of the sea of Sumenep is about 50,000 km².

Contact:

Address : Jl. Dr. Cipto 33, Sumenep

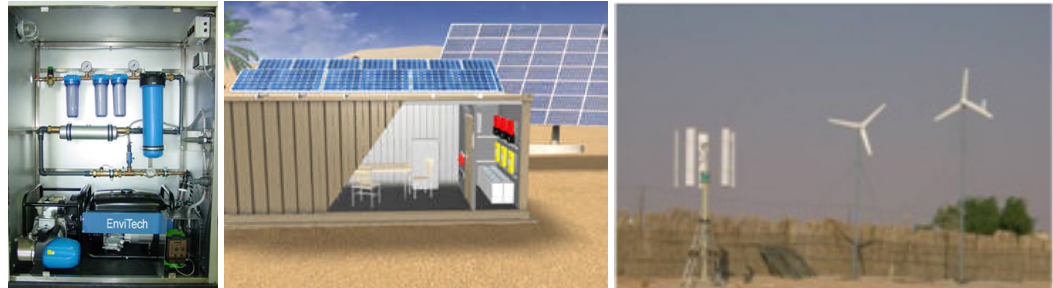
Phone : +62 328 662610, 662710, 662108

Fax : +62 328 662210, 663339

Website : <http://www.sumenep.go.id>

c) Industry

i) *EnviTech GmbH*



EnviTech develop environmental technologies and regenerative energy and water supply systems for a better future. The focus of EnviTech activities is especially on water purification and solar energy. The goal is to develop integral and sustainable concepts for the responsible handling of resources in accordance with nature. EnviTech Products provide its advantages even on the most stringent conditions. Especially in remote areas where a centralised supply is not available so far.

Products

EnviTech products are: 1) Renewable Energy: Photovoltaic modules and solar power systems, Solar water heaters and solar thermal collectors, Wind power plants, etc. 2) Water Treatment: Filtration plants, Reverse osmosis plants, Biological-physical sewage treatment plants, Ultraviolet disinfection plants, Distillation systems, etc.

Services

EnviTech services consists of: 1) Consultancy: Environmental consultancies, Water treatment and management programs, Energy generation and management programs, etc. 2) Energy supply: BOO (Build-Operate-Own) / BOT (Build-Operate-Transfer), PV power plants, Solar thermal power plants, etc. 3) Water supply: BOO (Build-Operate-Own) / BOT (Build-Operate-Transfer), Water analysis, Plant manufacturing, etc.

Contact:

Address : Nebelhornstr. 2, Mindelheim 87719, Germany

Phone : +49 8261 730959

Fax : +49 8261 730961

Website : <http://www.envitech.de>

ii) *Cosmic Star GmbH*

iii) **SanLeaf Europe GmbH**

SanLeaf is a company which produce and sell natural foods - products and organic foods. Its products are Bio organic spices, Nutritional supplement, Teas, Moringa, Jiaogulan, Jiamo balance, Schisandra, Salt of the Incas, Bio organic herb of Cistus, and Books.



"It is the duty of man to serve nature and to care for them, as it provides us with everything necessary from time immemorial."

Contact:

Address : Atterwascher Straße 11, 03172 Schenkendöbern OT Atterwasch, Germany

Phone : +49 35692 - 66933

Fax : +49 35692 - 66955

Website : <http://www.sanleaf-europe.com>

iv) PT. Surya Energy Solution (SEES)

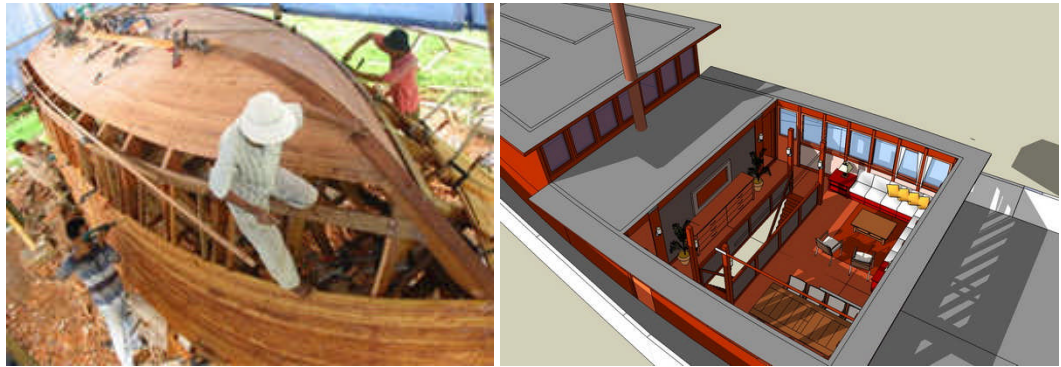


PT. Surya Energy Solutions (SEES), which began operating in 2009, is a company that engaged in LED (Light Emitting Diode) lamp assembly industry. Assembly is done on components imported from abroad such as China or Korea.

On April 8, 2013, SEES has agreed a cooperation agreement with Institut Teknologi Sepuluh Nopember, Surabaya (ITS). The agreement includes technology research and LED-making process in Indonesia. Hopefully, after all the research process completed, SEES will build its own factory in Indonesia.

v) **PT. Kakanoo Marine Enterprise**

Kakanoo as naval architecture and marine vessel building related services company, has been involved in designing, boatyard initiation and a number of marine vessel building projects from the very beginning. This experience has driven Kakanoo towards an orientation for excellence in delivering its wide array of marine solutions to its customers.



Area of Competence: Hull & construction design, Hull & construction building method and technology, Marine electrical system, Marine mechanical system, Marine piping system, Machinery and propulsion system, Marine Interior Design.

Services: 2D and 3D drawing (lines plan, general arrangement, interior/exterior profile, etc.), Technical calculations (stability, hydrostatic, powering, etc.), 3D visualization (exterior, interior, engine room, etc.).

Solutions: Marine Vessel Design Solutions (hull shape, construction, styling, general arrangement, etc.), Marine Vessel System Design Solutions (machinery, mechanical and electrical), Marine Interior Design Solution, and Marine Vessel Building, Maintenance and Repair Project Management Solutions (initiation, planning, execution, monitoring, controlling, and ending).

Contact:

Address : Jalan Salak M10, Kompleks Kalibata Indah, Jakarta 12750, Indonesia

Phone : +62 21 7919-5782

Fax : +62 21 7919-2703

Website : <http://www.kakanoo.com>

vi) **EKONID Surabaya**



EKONID, the German-Indonesian Chamber of Industry and Commerce, represents the bilateral business interests of Indonesian and German member companies and institutions. Acting as a strategic interface between the German and Indonesian economies, EKONID supports companies and institutions from both countries in opening up new trade and investment opportunities.

EKONID has an extensive membership network of many distinguished companies, firms and executives. With over 400 members EKONID enables its members to socialize and build important business relations through its member network.

A membership with the German Indonesian Chamber offers many benefits, which allow them to emerge with prestige and a good reputation in the German Indonesian business community. These services and benefits include, in addition to many others, networking and business events, referrals, consulting services, advertising, and publications.

Contact:

Address : Yayasan Mitra Indonesia-Jerman, Taman AIS Nasution 15, Surabaya 60271

Phone : +62 31 5343735

Fax : +62 31 5319507

Website : <http://indonesien.ahk.de>

